



# **GUADALUPE - COYOTE RESOURCE CONSERVATION DISTRICT**

## **CHANNEL TRASH - DEBRIS**

**Guadalupe River, San Jose, CA**

**(Blossom Hill Road – Highway 237)**

**888 North First Street Suite # 204**

**San Jose, CA 95112**

**Tel. (408) 288-5888 Fax (408) 993-8728**

**E-mail - [gcrd@pacbell.net](mailto:gcrd@pacbell.net)**



# Guadalupe - Coyote RCD

## Upper Guadalupe River - Trash/Debris



View towards the east bank just upstream of Blossom Hill Rd. a mattress thrown into the channel, items of clothing are also thrown along the bank. GPS 37.25030, -121.87033





# Guadalupe - Coyote RCD

## Upper Guadalupe River - Trash/Debris

---



L.M. Johmann  
Feb. 17, 2007

View of a culvert outfall on west bank about 200 yards downstream of Hwy 85. Small bits of trash were likely washed out of the culvert during rain event. GPS 37.25802, -121.86929





# Guadalupe - Coyote RCD

## Upper Guadalupe River - Trash/Debris

---



View towards the east bank several hundred yards downstream of Hwy 85. Debris/trash are accumulating in the channel.

GPS 37.25935, -121.86917





# Guadalupe - Coyote RCD

## Upper Guadalupe River - Trash/Debris

---



View towards the east bank at failing rock weirs near Bryan Ave. at the site of the old San Jose Water Co. low flow crossing.

GPS 37.26795, -121.87818





# Guadalupe - Coyote RCD

## Upper Guadalupe River - Trash/Debris



View towards the east bank at failing rock weirs & encampment site near Bryan Lane at the site of the old San Jose Water Co. low flow crossing.

GPS 37.26807, -121.87825





# Guadalupe - Coyote RCD

## Upper Guadalupe River - Trash/Debris



View downstream at a weir that a bridge has been constructed across near Bryan Lane at the site of the old San Jose Water Co. low flow crossing.

GPS 37.26807, -121.87825





# Guadalupe - Coyote RCD

## Upper Guadalupe River - Trash/Debris

---



Roger Castillo  
Dec. 2, 2006

View upstream about 50 yards upstream of the Foxworthy Ave. Bridge at junk and trash in the channel.

GPS 37.27797, -121.87790





# Guadalupe - Coyote RCD

## Upper Guadalupe River - Trash/Debris

---



View down into an overly narrow channel at a shopping cart thrown there fairly recently just downstream of the Foxworthy Ave. Bridge.

GPS 37.27873, -121.87788





# Guadalupe - Coyote RCD

## Upper Guadalupe River - Trash/Debris

---



View downstream from the Curtner Ave. Bridge at failed concrete retaining wall now on river bed. Large rock has been used in attempt to stabilize the bank. GPS 37.29237, -121.88049





# Guadalupe - Coyote RCD

## Upper Guadalupe River - Trash/Debris

---



View downstream from the Curtner Ave. Bridge at failing banks and a lot of trash/junk in the channel, on the banks and in the trees.

GPS 37.29241, -121.88041





# Guadalupe - Coyote RCD

## Upper Guadalupe River - Trash/Debris

---



View downstream about 50 yards downstream of Curtner Ave. at trash/junk in the channel, on the banks and in the trees.

GPS 37.29276, -121.88047





# Guadalupe - Coyote RCD

## Downtown Guadalupe FCP Impacts

---



View of failing west bank about 175 yards upstream of Malone Rd. despite tons of concrete rubble thrown over the banks in past years.      GPS 37.29634, -121.88121





# Guadalupe - Coyote RCD

## Upper Guadalupe River - Trash/Debris

---



L.M. Johmann  
April 1997

View of west bank about 150 yards upstream of Malone Rd. at tons of concrete rubble thrown over the banks and in the channel. Concrete rubble with dangerous protruding rebar was dumped all along the river years ago in an attempt to confine it. GPS 37.29645, -121.88095





# Guadalupe - Coyote RCD

## Upper Guadalupe River - Trash/Debris

---



View upstream several hundred yards downstream of Alma St. at failing banks and a lot of trash in the trees.

GPS 37.31101, -121.88639





# Guadalupe - Coyote RCD

## Downtown Guadalupe – Trash/Debris

---

L.M. Johmann  
Jun. 16, 2005



View towards the east bank under I-280 at a rock blob in the low flow channel with a half dozen packages of meat sitting on the rocks in the water, arrows. A longitudinal profile is being performed by students and the GCRC.

GPS 37.32417, -121.89036





# Guadalupe - Coyote RCD

## Downtown Guadalupe – Trash/Debris

---

L.M. Johmann  
Jun. 16, 2005



View of packages of meat sitting in the water on rocks in previous photo. The meat looks fresh but why it was placed in the dirty river is puzzling. GPS 37.32417, -121.89036





# Guadalupe - Coyote RCD

## Downtown Guadalupe – Trash/Debris

---



View downstream the west bank about 150 yards downstream of Woz Way at trash and garbage in the channel, on the bank & in the trees

GPS 37.32716, -121.89077





# Guadalupe - Coyote RCD

## Downtown Guadalupe – Trash/Debris

---



View towards the east bank about 200 yards downstream of Woz Way, near Observation Point at trash along the bank and in the channel. GPS 37.32757, -121.89108





# Guadalupe - Coyote RCD

## Downtown Guadalupe – Trash/Debris

---



**L.M. Johmann**  
**Oct. 30, 2004**

View downstream, just downstream of San Carlos St. Downed trees, junk/debris/trash blocking the channel.

GPS 37.32897, -121.89290

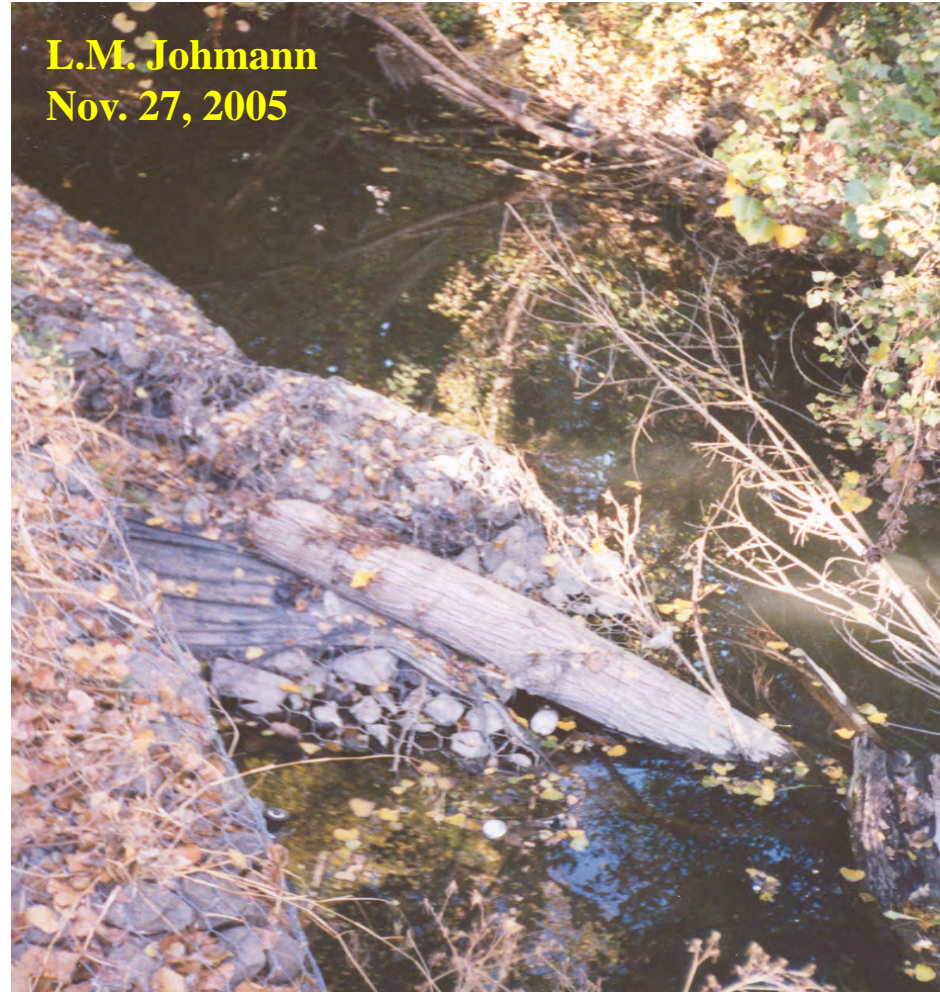




# Guadalupe - Coyote RCD

## Downtown Guadalupe – Trash/Debris

---



View downstream, just downstream of San Carlos St. Downed trees and failing gabion blocking the channel.

GPS 37.32897, -121.89290





# Guadalupe - Coyote RCD

## Downtown Guadalupe – Trash/Debris



View downstream, just downstream of San Carlos St. Downed trees, junk/debris/trash in the channel & on the banks, arrow shows 55 gal. drum.

GPS 37.32897, -121.89290



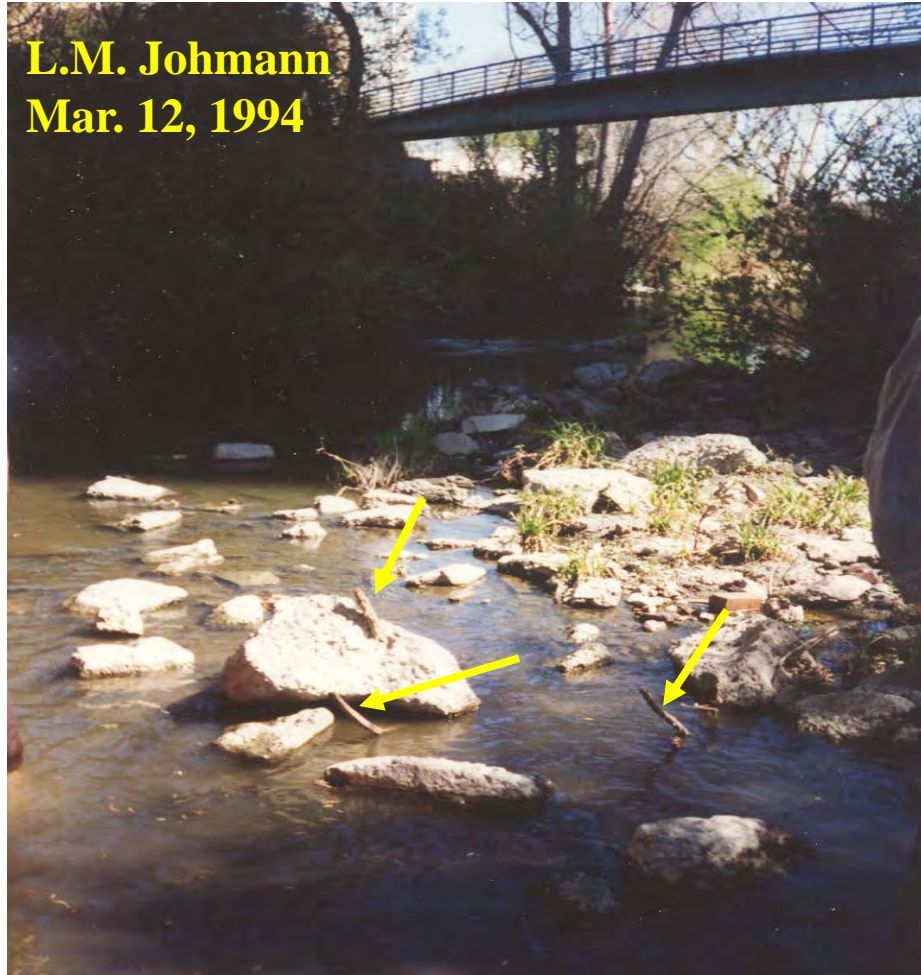


# Guadalupe - Coyote RCD

## Downtown Guadalupe – Trash/Debris

---

L.M. Johmann  
Mar. 12, 1994



View upstream about 100 yards downstream of San Carlos St. at hazardous concrete rubble with protruding rebar in the channel, arrows      GPS 37.32935, -121.89372

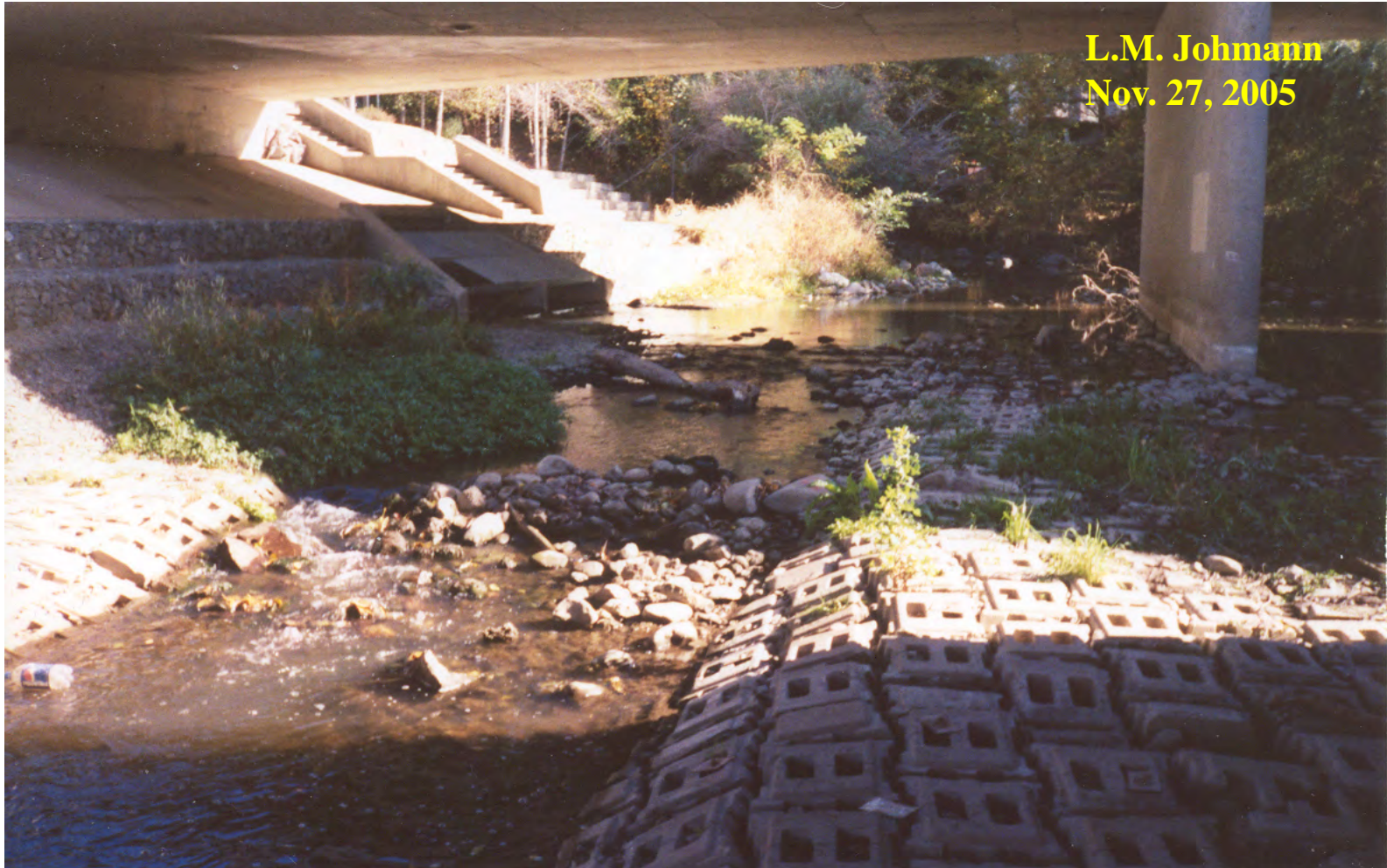




# Guadalupe - Coyote RCD

## Downtown Guadalupe – Trash/Debris

---



L.M. Johmann  
Nov. 27, 2005

View upstream under Park Ave., rocks and rubble in the channel and low flows block fish migration and navigation.

GPS 37.32994, -121.89480





# Guadalupe - Coyote RCD

## Downtown Guadalupe – Trash/Debris

---



View towards the west bank under the Julian St. Bridge. Junk and debris in the channel and low flows blocking fish migration. Salmon were trying to spawn in the area, as they couldn't get upstream and were being poached by the homeless. GPS 37.33612, -121.90020





# Guadalupe - Coyote RCD

## Downtown Guadalupe – Trash/Debris

---



View towards the west bank just downstream of the Julian St. Bridge. Junk/garbage from an encampment on the bank & in the channel. .

GPS 37.33626, -121.90028





# Guadalupe - Coyote RCD

## Downtown Guadalupe – Trash/Debris

---



View downstream from the Julian St. Bridge. Debris starting to obstruct the channel & trash in the channel & on the banks degrade water quality.

GPS 37.33624, -121.90037





# Guadalupe - Coyote RCD

## Downtown Guadalupe – Trash/Debris



**L.M. Johmann**  
**Mar. 12, 1994**

Photo by L.M. Johmann © 1994

View downstream at the most southerly of 4 Union Pacific Rail Road trestles. Debris/junk/trash piled over 6 ft. high blocking the channel. City and SCVWD officials were informed of the problem & shown photos but did nothing to correct it. GPS 37.33830, -121.90226





# Guadalupe - Coyote RCD

## Downtown Guadalupe – Trash/Debris



Photo by L.M. Johmann © 1995

L.M. Johmann  
Mar. 11, 1995

View upstream at the southern most Union Pacific Rail Road trestle. Debris/junk/trash piled over 30 ft. high, over the top of the bridge, blocking the channel causing the flooding of San Jose. Railroad cars filled with rock parked on bridge to stabilize it. GPS 37.33904, -121.90254





# Guadalupe - Coyote RCD

## Downtown Guadalupe – Trash/Debris

---



L.M. Jochmann  
March 11, 1995

View towards the west bank, on the most southerly of 4 Union Pacific Rail Road trestles. Debris/junk/trash piled over 30 ft. high, over the top of the bridge and around car wheels blocking the channel causing the flooding of San Jose. GPS 37.33849, -121.90223





# Guadalupe - Coyote RCD

## Downtown Guadalupe – Trash/Debris

---

L.M. Johmann  
Mar. 12, 1995



View downstream at the most southerly Union Pacific Rail Road trestle. Debris/junk/trash piled over 30 ft. high on the bridge. The railroad cars and some debris have been removed but there is still a massive & dangerous channel blockage. GPS 37.33792, -121.90195





# Guadalupe - Coyote RCD

## Downtown Guadalupe – Trash/Debris

---



View towards the west bank, on the most southerly of 4 Union Pacific Rail Road trestles.  
Debris/junk/trash is rebuilding on the trestle.

GPS 37.33849, -121.90223





# Guadalupe - Coyote RCD

## Downtown Guadalupe – Trash/Debris

---



L.M. Johmann  
May. 13, 2006

View downstream at the only remaining Union Pacific Rail Road trestle. Debris/junk/trash piled about halfway up the bridge again blocking the channel. GPS 37.33813, -121.90216





# Guadalupe - Coyote RCD

## Downtown Guadalupe – Trash/Debris

---



View downstream from the only remaining Union Pacific Rail Road trestle. Debris/junk/ trash piled up in the channel. Most trash is coming from encampments. GPS 37.33845, -121.90237





# Guadalupe - Coyote RCD

## Downtown Guadalupe – Trash/Debris

---



View downstream from the only remaining Union Pacific Rail Road trestle. Debris/junk/ trash piled up in the channel. Most trash is coming from encampments. GPS 37.33845, -121.90237





# Guadalupe - Coyote RCD

## Downtown Guadalupe – Trash/Debris

---



View downstream about 10 yards downstream of the UPRR trestle at debris/trash in the channel.

GPS 37.33861, -121.902249





# Guadalupe - Coyote RCD

## Downtown Guadalupe – Trash/Debris



View downstream at a log/shopping cart salmon trap about 200 yards downstream of Coleman Ave. A dead salmon was found in one of the carts, arrow.

GPS 37.34308, -121.90215





# Guadalupe - Coyote RCD

## Downtown Guadalupe – Trash/Debris



Photo by L.M. Johmann © 1998

View downstream at a log/shopping cart salmon trap about 200 yards downstream of Coleman Ave. The trap was completely removed & CAF&G was called. In the 2 hours it took the warden to arrive the trap had been partially reconstructed. GPS 37.34308, -121.90215





# Guadalupe - Coyote RCD

## Downtown Guadalupe – Trash/Debris



View downstream at salmon trap. CDF&G warden examines the salmon dead female Chinook salmon. No one was apprehended & the trap was removed again. GPS 37.34308, -121.90215





# Guadalupe - Coyote RCD

## Downtown Guadalupe – Trash/Debris

---



View several hundred yards downstream of Taylor St. toward Hedding St. Tons of concrete rubble with protruding rebar had been dumped along the banks of the Guadalupe & most area streams years ago in an ill advised effort to confine them. GPS 37.34745, -121.90703

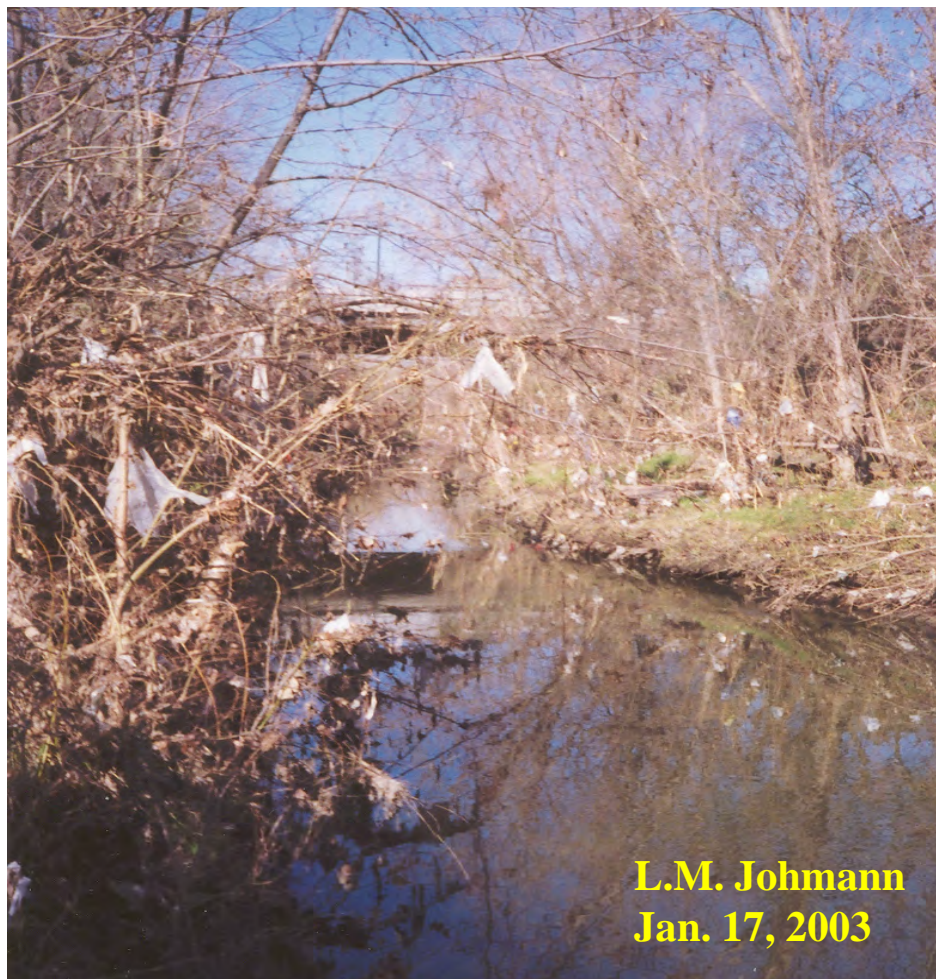




# Guadalupe - Coyote RCD

## Downtown Guadalupe – Trash/Debris

---



View downstream towards Taylor St. Trash in the channel, on the banks and hanging from the trees. There are many encampments in the area.

GPS 37.34559, -121.90443





# Guadalupe - Coyote RCD

## Downtown Guadalupe – Trash/Debris



Photo by L.M. Johmann © 1994

**Guadalupe River - San Jose, CA**

**August 1994**

View downstream of the old Hedding St. Bridge at junk in the channel, including shopping carts & water heater. Hundreds of shopping carts are thrown into the river each year, many becoming embedded in the sediment so are difficult to remove. GPS 37.35021, -121.90982





# Guadalupe - Coyote RCD

## Downtown Guadalupe – Trash/Debris

---



View of west bank downstream of Hedding St. Tons of concrete rubble with protruding rebar had been dumped along the banks years ago in an effort to confine the river. This extremely hazardous junk can be found along banks of most area streams. GPS 37.35056, -121.90998





# Guadalupe - Coyote RCD

## Downtown Guadalupe – Trash/Debris

---



L.M. Johmann  
May 15, 2002

View upstream at debris/trash dam about 100 yds upstream of Hwy I-880. Trees create the dam but most of the trash is coming from area encampments. GPS 37.35295, -121.91161





# Guadalupe - Coyote RCD

## Downtown Guadalupe – Trash/Debris

---



View upstream at debris/trash dam about 100 yards upstream of Hwy I-880. Most of the trash is coming from area encampments

GPS 37.35295, -121.91161





# Guadalupe - Coyote RCD

## Downtown Guadalupe – Trash/Debris

---



View downstream at a debris/trash dam blocking the channel about 100 yards upstream of Hwy I-880.

GPS 37.35272, -121.91136





# Guadalupe - Coyote RCD

## Downtown Guadalupe – Trash/Debris

---



View towards the east bank at debris/trash dam about 100 yards upstream of Hwy I-880.  
Most of the trash is coming from area encampments

GPS 37.35272, -121.91136





# Guadalupe - Coyote RCD

## Downtown Guadalupe – Trash/Debris

---



View towards the east bank at debris/trash dam about 100 yards upstream of Hwy I-880.  
Most of the trash is coming from area encampments

GPS 37.35272, -121.91136





# Guadalupe - Coyote RCD

## Lower Guadalupe River – Trash/Debris



Photo by L.M. Johmann © 1994

**Guadalupe River - San Jose, CA**

**December 1994**

View Downstream, several hundred yards downstream of Trimble Ave., the photo shows a trash raft building at the upper center of the photo. (GPS 37.38225, -121.93788)





# Guadalupe - Coyote RCD

## Lower Guadalupe River – Trash/Debris



**Guadalupe River - San Jose, CA**

**December 1994**

View Downstream, several hundred yards downstream of Trimble Ave., the photo shows some trash and a dead salmon, top arrow. (GPS 37.38200, -121.93799)





# Guadalupe - Coyote RCD

## Lower Guadalupe River – Trash/Debris

---



Looking down towards the river at trash and junk from the west levee, several hundred yards downstream of Trimble Ave. (GPS 37.38244, -121.93782)





# Guadalupe - Coyote RCD

## Lower Guadalupe River – Trash/Debris

---



Photo by L.M. Johmann © 1994

**Guadalupe River - San Jose, CA**

**November 1994**

View Downstream, about .3 miles downstream of Trimble Ave., the channel is completely blocked by debris & trash.

(GPS 37.38267, -121.93749)





# Guadalupe - Coyote RCD

## Lower Guadalupe River – Trash/Debris

---



Ron Atkins  
May 9, 2006

View Upstream, about .4 miles downstream of Trimble Ave., trash/debris raft is completely blocking the channel.  
(GPS 37.38427, -121.93589)





# Guadalupe - Coyote RCD

## Lower Guadalupe River – Trash/Debris

---



Looking down towards the river from the west levee, about .4 miles downstream of Trimble Ave. Trash is accumulating on the floodplain. (GPS 37.38702, -121.93617)





# Guadalupe - Coyote RCD

## Lower Guadalupe River – Trash/Debris



Ron Atkins  
May 9, 2006

View Upstream, about .5 miles downstream of Trimble Ave., downed trees and trash blocking the channel.  
(GPS 37.38324, -121.93681)





# Guadalupe - Coyote RCD

## Lower Guadalupe River – Trash/Debris



Looking down towards the river from the west levee, about .5 miles downstream of Trimble Ave. Trash is accumulating on the floodplain. (GPS 37.38765, -121.93717)





# Guadalupe - Coyote RCD

## Lower Guadalupe River – Trash/Debris



Photo by L.M. Johmann © 1999

**Guadalupe River - San Jose, CA**

**May 13, 1999**

View Downstream, about .6 miles downstream of Trimble Ave., clean-up effort, National River Clean-up Day.  
(GPS 37.38950, -121.93881)





# Guadalupe - Coyote RCD

## Lower Guadalupe River – Trash/Debris



**Guadalupe River - San Jose, CA**

**May 13, 1999**

About .6 miles downstream of Trimble Ave., Clean-up effort, National River Clean-up Day.  
(GPS 37.38909, -121.93852)





# Guadalupe - Coyote RCD

## Lower Guadalupe River – Trash/Debris



Photo by L.M. Johmann © 1999

**Guadalupe River - San Jose, CA**

**March 21, 1999**

View Downstream, about .7 miles downstream of Trimble Ave., the channel is completely blocked by debris & trash, blocking navigation. (GPS 37.39081, -121.93931)





# Guadalupe - Coyote RCD

## Lower Guadalupe River – Trash/Debris

---



View from the west levee about 500 yds downstream of Montague Expressway, the channel is blocked by debris & trash. (GPS 37.39972, -121.94154)





# Guadalupe - Coyote RCD

## Lower Guadalupe River – Trash/Debris

---



Ron Atkins  
May 8, 2006

View Upstream, about 400 yds downstream of Montague Expressway, trash/debris raft in the channel.  
(GPS 37.40213, -121.94855)





# Guadalupe - Coyote RCD

## Lower Guadalupe River – Trash/Debris



View Upstream, about 500 yds downstream of Montague Expressway, trash/debris raft is completely blocking the channel. (GPS 37.40213, -121.94855)





# Guadalupe - Coyote RCD

## Lower Guadalupe River – Trash/Debris



View from the west levee just downstream of the pedestrian bridge, downstream of Montague Expressway, the main channel is blocked by debris/trash, arrow. (GPS 37.40053, -121.94187)





# Guadalupe - Coyote RCD

## Lower Guadalupe River – Trash/Debris



L.M. Johmann  
Feb. 4, 2007

View from the west levee about 650 yds downstream of Montague Expressway, the west channel is littered by debris/trash. (GPS 37.40063, -121.94340)





# Guadalupe - Coyote RCD

## Lower Guadalupe River – Trash/Debris



View Upstream, about 700 yds downstream of Montague Expressway, trash/debris raft blocking the channel. (GPS 37.40213, -121.94855)





# Guadalupe - Coyote RCD

## Lower Guadalupe River – Trash/Debris



View from the west levee about 750 yds downstream of Montague Expressway, the west channel is littered with trash, arrows. (GPS 37.40062, -121.94475)





# Guadalupe - Coyote RCD

## Lower Guadalupe River – Trash/Debris

---



View upstream, about .5 mile downstream of Montague Expressway, trash/debris  
littering the length of the channel. (GPS 37.40079, -121.94587)





# Guadalupe - Coyote RCD

## Lower Guadalupe River –Trash/Debris

---



L.M. Johmann  
Feb. 4, 2007

View from the west levee about .5 mile downstream of Montague Expressway, the channels are blocked by debris/trash, arrows. (GPS 37.40113, -121.94677)





# Guadalupe - Coyote RCD

## Lower Guadalupe River – Trash/Debris



Photo by L.M. Johann © 1994

**Guadalupe River - San Jose, CA**

**November 5, 1994**

View upstream, about .5 miles downstream of Montague Expressway, the channel is completely filled with trash/debris blocking navigation. (GPS 37.40114, -121.94694)





# Guadalupe - Coyote RCD

## Lower Guadalupe River – Trash/Debris



Photo by L.M. Johmann © 1994

**Guadalupe River - San Jose, CA**

**November 5, 1994**

View upstream, about .5 miles downstream of Montague Expressway, the channel is completely filled with trash/debris blocking navigation. (GPS 37.40114, -121.94694)





# Guadalupe - Coyote RCD

## Lower Guadalupe River – Trash/Debris

---



View from the west levee about .6 mile downstream of Montague Expressway, the channel is blocked by debris/trash. (GPS 37.40146, -121.94793)





# Guadalupe - Coyote RCD

## Lower Guadalupe River – Trash/Debris

---



Close view of a trash/debris raft, about .6 mile downstream of Montague Expressway,  
blocking the channel. (GPS 37.40213, -121.94855)





# Guadalupe - Coyote RCD

## Lower Guadalupe River – Trash/Debris

---



L.M. Johmann  
Feb. 4, 2007

View from the west levee about .7 miles downstream of Montague Expressway, the west channel is blocked by debris/trash. (GPS 37.40249, -121.94953)





# Guadalupe - Coyote RCD

## Lower Guadalupe River – Trash/Debris



Close-up view of trash/debris raft in the channel about .7 mile downstream of Montague Expressway.  
(GPS 37.40213, -121.94855)





# Guadalupe - Coyote RCD

## Lower Guadalupe River – Trash/Debris

---



L.M. Johmann  
Feb. 4, 2007

View from the west levee about .8 miles downstream of Montague Expressway, channel is blocked by debris/trash, center of the photo. (GPS 37.40263, -121.94987)





# Guadalupe - Coyote RCD

## Lower Guadalupe River – Trash/Debris



View upstream, about .8 mile downstream of Montague Expressway, trash/debris raft blocking the channel. (GPS 37.40355, -121.95052)